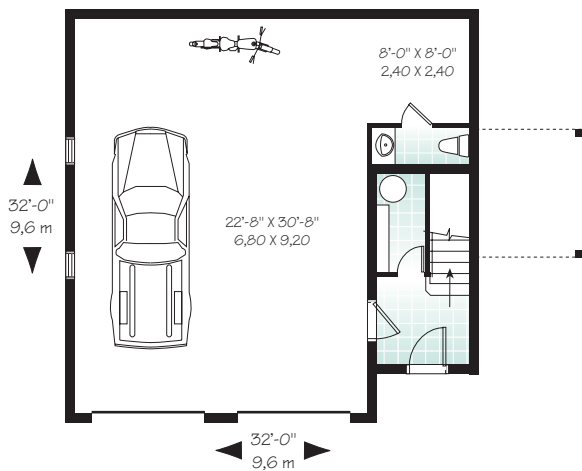




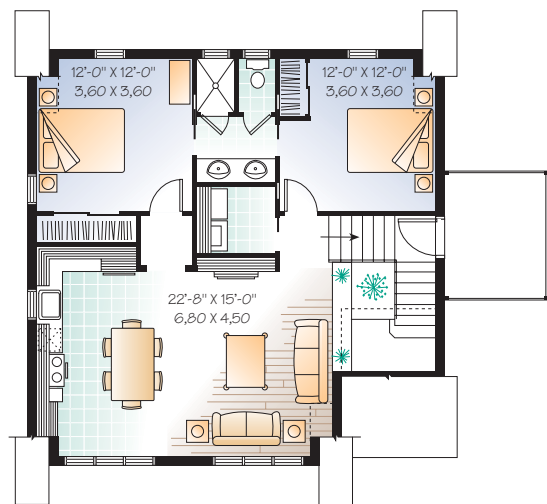
To order this plan as illustrated or modified to your needs :
 visit our **Website** : www.drummond designs.com
 or contact us at **1-800-567-5267**

Total living area : 1068 sq.ft. (96,12 sq.m.) excluding garage
 Bedrooms : 2 Bathrooms : 1 1/2
 Two-car garage : 855 sq.ft. (76,95 sq.m.)
 Height from top of foundation to ridge : 28'-8" / 8,60m

First level : 140 sq.ft. (12,60 sq.m.)



Second level : 928 sq.ft. (83,52 sq.m.)



The Canadian Timber Company
 Panelized Home Specialists
www.canadiantimber.ca 1-877-505-0551

Certain measures and/or dimensions may differ from those on the blueprints.