

Front view

Plan 3506 plan price code: D

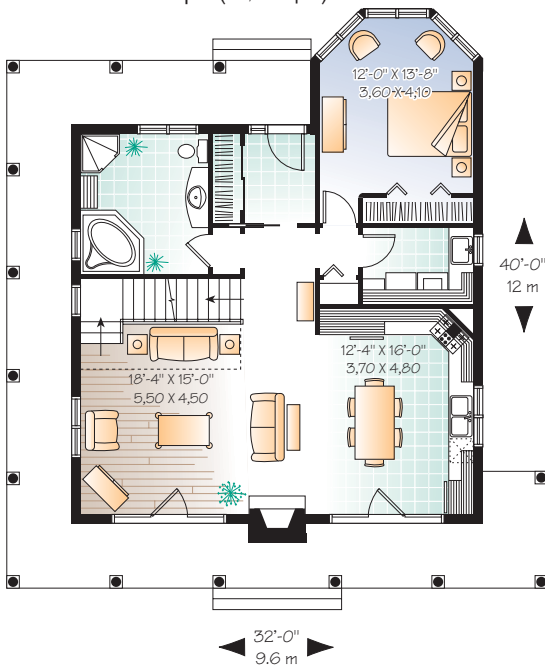


To order this plan as illustrated or modified to your needs :  
visit our Web site : [www.drummond designs.com](http://www.drummond designs.com)  
or contact us at 1-800-567-5267

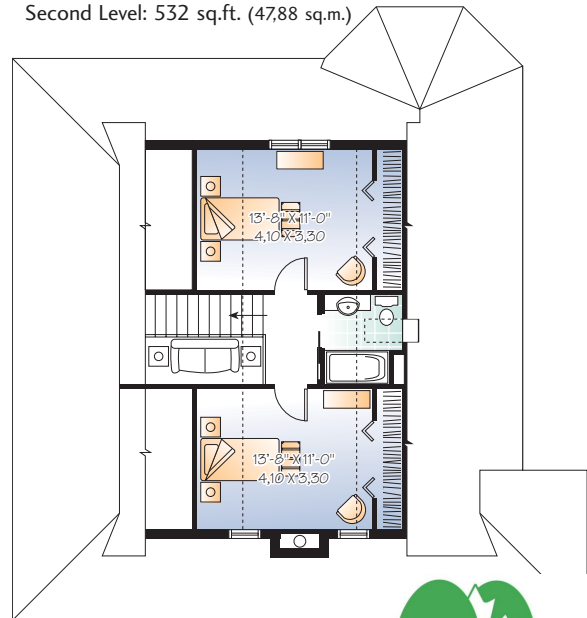
Total living area : 1 630 sq.ft. (146,70 sq.m.) excluding basement  
Bedrooms : 3 Bathrooms : 2

Height from top of foundation to ridge : 24'-10" / 7,45 m.

First Level: 1098 sq.ft. (98,82 sq.m.)



Second Level: 532 sq.ft. (47,88 sq.m.)



Certain measures and/or dimensions may differ from those on the blueprints.