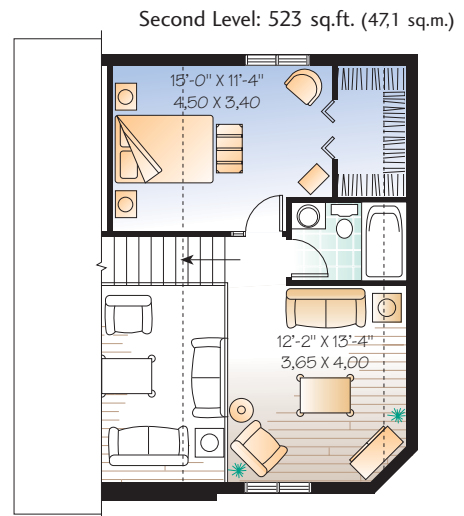
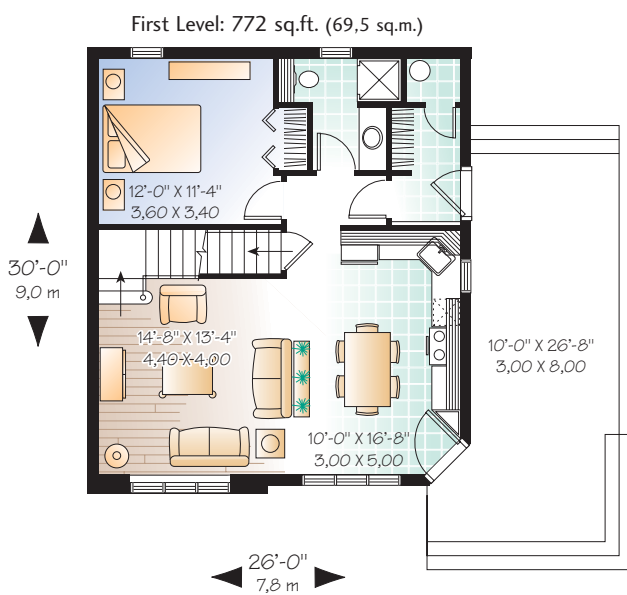




To order this plan as illustrated or modified to your needs :  
 visit our Web site : [www.drummond designs.com](http://www.drummond designs.com)  
 or contact us at 1-800-567-5267

**Total living area : 1295 sq.ft.** (116,5 sq.m.) excluding basement  
 Bedrooms : 2 to 3 Bathrooms : 2

Height from top of foundation to ridge : 27'-8" / 8,30 m.



**The Canadian Timber Company**  
 Panelized Home Specialists  
[www.canadiantimber.ca](http://www.canadiantimber.ca) 1-877-505-0551

Certain measures and/or dimension may differ from those on the blueprint.